



# 2021 INFORMATION BOOKLET

**St Mary's 7-9 Campus:** 273 Victoria St, West Melbourne 3003

**St Brigid's 10-12 Campus:** cnr Alexandra Pde & Nicholson St, Fitzroy North 3068

**T:** 03 9321 9200 **E:** [info@sccmelb.catholic.edu.au](mailto:info@sccmelb.catholic.edu.au) **W:** [www.sccmelb.catholic.edu.au](http://www.sccmelb.catholic.edu.au)



# OUR VISION IS TO DEVELOP CONFIDENT, WELL-ROUNDED YOUNG MEN WHO HAVE HOPE FOR THEIR FUTURE.

## OUR MISSION

The Simonds Catholic College community, united in faith, inspires young men to become active, global citizens. Guided by Gospel values, we provide a safe and supportive learning environment in which each student is individually known. We challenge our students to become courageous, resilient and hope-filled.

## WE VALUE

### CATHOLIC BELIEFS AND TEACHINGS

particularly those relating to justice, charity and compassion. We encourage everyone to give of themselves, allocating time and other resources to people who are in need, both within and beyond the school community;

### INCLUSIVITY

respecting people of all cultures, genders and religions who act in sympathy with our values;

### PASTORAL PROGRAMS

that promote an appreciation for the whole person. We foster a spirit of mateship that strengthens through the school years, forging lifelong bonds;

### FULLY COMMITTED TEACHERS

who provide contemporary and purposeful learning for all students;

### RESPECTFUL BEHAVIOUR

We strive to provide a collaborative and supportive learning culture that recognises the dignity of each person. Respect for self, others and the environment is intrinsic to school life;

### MOTIVATED STUDENTS

who actively pursue excellence and assume responsibility for their own learning.

*"Dear Young People...  
Don't be afraid to dream of great things"*

*Pope Francis*



## SCHOOL HISTORY

Established in 1996, Simonds Catholic College is the result of an amalgamation of West Melbourne's St. Mary's Boys' Regional School and East Melbourne's Cathedral College. We exist to provide an excellent Catholic education for boys in the inner-city area of Melbourne. A second campus, located in Fitzroy North, was opened in 2011 which now educates boys in Years 10,11 and 12.

We are honoured to be the first school to be named after Justin Simonds, Archbishop of Melbourne 1963-67, Parish Priest of West Melbourne for 21 years, and the first Australian born Archbishop. His Australian heritage is most appropriate for our school, which aims to bring together boys from many different backgrounds and educate them towards maturity as responsible adults who are proud to be Australian. Justin Simonds was also a distinguished scholar and although he was only Archbishop of Melbourne for a few years, he made a substantial contribution to Catholic education at a time of great expansion in the number of Catholic secondary schools in the Archdiocese of Melbourne. Simonds Catholic College draws on the traditions of two excellent schools:

### St Mary's Boys' Regional School

St Mary's Boys' Regional School began in 1855 as a primary school for boys. The school was located in the old St Mary's Church. During the week a curtain was drawn across the middle of the church. On one side of the curtain was St Mary's Girls' School and on the other St Mary's Boys' School. All the teachers at the boys' school were lay teachers. In 1902 the Christian Brothers were invited to administer the school which they did until 1985. A new school facing onto Howard Street was built in 1910. This school was further extended in 1970 and 1976 and the school gradually changed from providing primary education to catering for boys in Years 7-10.

### Cathedral College

Cathedral College was so named because of its association with St Patrick's Cathedral, it has both an old and unique history. Originally the college was the foundation college of the Christian Brothers in Australia and was opened in 1871. At the end of 1967, CBC Victoria Parade, known simply as Parade, moved to Bundoora. During that year the Archdiocese bought the site from the Christian Brothers following the decision to establish Cathedral College as a diocesan school. Cathedral College was administered by the Christian Brothers until it closed in 1995.

## COLLEGE CREST

The school emblem emphasises belonging, community and faith

**Shield** – Expresses our identity as a community which shares a common faith and purpose.

**Cross** – Reminds us of our membership in the Christian Community. The 3D effect symbolically reminds us of the multi-faceted nature of Christianity. These values include respect for self, others and the environment.

**Laurel Leaves** – Symbolically used throughout history to represent victory and success, students will not 'rest on their laurels' – they'll be known, supported and inspired on their path to a successful outcome.



**Stars of the Southern Cross** – Symbolises our membership in the Australian community. We are responsible citizens who are proud to be Australian, who work towards creating a country where all people are valued and encouraged to achieve their best.

**Gold** – Signifies our links with Cathedral College.

**Maroon** – Signifies our links with St Mary's Boys' Regional School.

**Blue** – Unifies the two schools, joined together to create Simonds Catholic College. It is also the colour traditionally associated with Mary and expresses our links with our parish Church, St Mary Star of the Sea.

# PASTORAL CARE

The small size of Simonds Catholic College allows for boys to be individually known and appreciated for the unique person they are. A wide variety of structures and processes have been established to promote a sense of belonging and wellbeing amongst the boys, especially those who are new to the College.

## Pastoral Care Teachers

All students are allocated to a Pastoral Care class. The Pastoral Care Teacher is responsible for the welfare of each student in this class. For Years 7-10 students, the Pastoral Care Teacher is also likely to take them for one or more subjects.

## Pastoral Classes

Boys in Years 7-10 have a Pastoral Class each week. The aims of this class are to support each boy's social and emotional learning and to promote the wellbeing of all students. Years 11 and 12 students participate in a fortnightly Pastoral session.

## Wellbeing at Simonds Program - W@SP

A Student Counsellor and Coordinator of Wellbeing, Ms Anne Dunell joined our staff in 2020. Ms Dunell is available to assist students, parents and staff with any emotional or wellbeing needs that arise during their time at the College.

## Student Representative Council

Boys from Years 7-11 nominate themselves to be elected to the Student Representative Council by their peers. In Year 12, Student Leaders are chosen from the whole student group. The SRC organises many different activities across all year levels, including the annual Simonds Trivia Night and raising money for social justice activities.

## Expectation of Students

As members of a Christian community we acknowledge the sacredness of our personal and communal lives. The expectations listed here aim to ensure that the rights of both students and members of staff are respected. They remind students of their responsibilities towards the development of a college environment in which excellence in teaching and learning are encouraged and supported.

### **Respect for Self**

Respecting my own person enables me to grow in dignity and to achieve all that I am capable of achieving.

### **Respect for the Environment**

By respecting the environment I acknowledge the sacredness of God's creation and my responsibility for its development.

### **Respect for Others**

By respecting others I enhance their self-esteem, help them to recognise their personal abilities, and support them in their learning.

### **Good Manners**

Good manners are small habitual ways of showing the consideration one would wish for oneself and of making social life more pleasant.





# ENROLMENT PROCEDURES & GUIDELINES

## Key Enrolment Dates

Applications Close for Year 7:	20 August 2021
Enrolment Interviews:	September 2021
Letters of Offer Posted:	22 October 2021
Acceptance of Offer:	12 November 2021 (Final Acceptance date)

Entry at other year levels or mid-year placements can be accommodated if places are available.

## Enrolment Process

Simonds Catholic College adheres to the Enrolment Guidelines of the Melbourne Catholic Education Office. Catholics receive priority when enrolling; however, we welcome enrolment applications from all religious traditions.

## Year 7 Entry

If you select Simonds Catholic College for your son, we require you to:

- Complete an Enrolment Form and prepare all required documents
- Submit completed Enrolment Form, documents with a non-fundable Enrolment Application Fee of \$110 to our Registrar
- Attend an Enrolment Interview with the College Principal
- Letters of Offer will be posted to families on the dates noted above

Upon confirmation of a place at Simonds Catholic College, an Enrolment Acceptance Deposit of \$350.00 is payable to secure your son's enrolment. This Deposit is deducted from the Tuition Fee and is nonrefundable.

A 5% discount will be applied to the following year's tuition fees if the current year's fees for tuition and laptop levy are paid in full by early February. A sibling discount of 10% applies to the 2nd student and a 20% discount applies to subsequent children. Sibling discounts apply to tuition fees only. If you have any queries, please contact the College Business Manager, Halyer Rayner on 9321 9200.

## Guidelines for Enrolment of Year 7 Students

Simonds Catholic College draws its enrolments from Priority Parishes allocated by the Catholic Education Office. Some parents living in other Parishes choose to enrol their sons at Simonds rather than their local regional college for a variety of reasons, including the College's central location for transport and parental work, its small size, particular curriculum offerings and emphasis on pastoral care.

## Enrolment Criteria

Boys will be offered a place in Year 7 in the following order of priority:

- Catholic boys who live in a Priority Parish and attend a Catholic Primary school.
- Catholic boys who live in a Priority Parish and who do not attend a Catholic Primary school.
- Catholic boys who don't live in a Priority Parish and wish to attend Simonds for pastoral reasons.
- Non-Catholic boys who have attended a Catholic primary school and are residents of the catchment area.
- Boys from non-Catholic Eastern Churches who attend a Catholic Primary School.
- Boys from non-Catholic Eastern Churches who do not attend a Catholic Primary School.
- Non-Catholic boys who have not attended a Catholic primary school and are residents of the catchment area.
- Non-Catholic boys who do not live in the catchment area.

- Note**
- Siblings and applicants whose sister attends/ have attended either St Aloysius College or The Academy of Mary Immaculate will receive special consideration.
  - Priority will be given to those families who submit enrolment applications by the due date.
  - Families who submit late applications may be placed on a waiting list. The above Enrolment Criteria will then apply to the waiting list.

## Years 7-12 Mid-Year Entry

Mid-year enrolments for Years 7-12 can be accommodated if places are available. Once an Enrolment Form and the required documentation has been received, the Principal will conduct an interview with the student and his parents/guardians. Upon acceptance, a non-refundable Acceptance Fee and 10% of the annual tuition fee is payable prior to commencement at the school. This amount paid will be deducted from the first tuition account.

## Priority Parishes Formally Attached to Simonds Catholic College

St Mary's  
 St Ambrose's  
 Our Lady Help of Christians  
 St Margaret Mary's  
 St Joseph's  
 St John's  
 St Paul's  
 St Bernard's  
 St Joseph's  
 St Mark's  
 St Matthew's  
 All Saints  
 St Brigid's  
 St Brendan's  
 St Monica's

Ascot Vale  
 Brunswick  
 Brunswick East  
 Brunswick North  
 Brunswick West  
 Clifton Hill  
 Coburg  
 Coburg East  
 Collingwood  
 Fawkner  
 Fawkner North  
 Fitzroy  
 Fitzroy North  
 Flemington  
 Footscray

Corpus Christi  
 St Thomas Moore's  
 Holy Rosary  
 Our Lady of Perpetual Help  
 St Augustine's  
 St Francis'  
 St Patrick's  
 St Michael's  
 St Mary Star of the Sea  
 St Fidelis'  
 St Francis de Sales  
 St Carthage's  
 St Oliver Plunkett's  
 St Ignatius  
 St James'

Glenroy  
 Hadfield  
 Kensington  
 Maidstone  
 Melbourne, Bourke St  
 Melbourne, Lonsdale St  
 Cathedral  
 North Melbourne  
 West Melbourne  
 Moreland  
 Oak Park  
 Parkville  
 Pascoe Vale  
 Richmond  
 Richmond North

## Primary Schools Attached to our Priority Parishes

St Mary's  
 Our Lady Help of Christian's  
 St Margaret Mary's  
 St Joseph's  
 St John's  
 St Paul's  
 St Bernard's  
 St Joseph's  
 St Mark's  
 St Matthew's  
 Sacred Heart

Ascot Vale  
 Brunswick East  
 Brunswick North  
 Brunswick West  
 Clifton Hill  
 Coburg  
 Coburg East  
 Collingwood  
 Fawkner  
 Fawkner North  
 Fitzroy

St Brendan's  
 St Monica's  
 St John's  
 Corpus Christi  
 St Thomas More's  
 Holy Rosary  
 St Margaret's  
 St Fidelis'  
 St Michael's  
 St Francis de Sales  
 St Oliver Plunkett's  
 Trinity Catholic School

Flemington  
 Footscray  
 Footscray West  
 Glenroy  
 Hadfield  
 Kensington  
 Maribyrnong  
 Moreland  
 North Melbourne  
 Oak Park  
 Pascoe Vale  
 Richmond North



# CURRICULUM

Our curriculum is comprehensive and challenging. Each student is stimulated and provided with opportunities to be extended to reach their full potential. We provide for the different needs and talents of all students through both support and extension programs.

## Years 7-9

The focus in Years 7-9 is on building solid academic foundations in preparation for the years ahead. Students' literacy, numeracy and technological aptitude are fundamental requirements for students' lives and futures, and these areas are given particular emphasis in the curriculum.

### Core Subjects

#### Year 7

English  
Health & Physical Education  
Humanities  
Mathematics  
Religious Education  
Science

#### Year 8

English  
Health & Physical Education  
Humanities  
Italian or Japanese or SPARK  
Mathematics  
Religious Education  
Science

#### Year 9

Careers, Civics & Citizenship\*  
English  
Health & Physical Education  
Humanities  
Italian, Japanese or SPARK  
Mathematics  
Product Engineering (STEM)\*  
Religious Education  
Science

\* One semester each

### Year 9 Off Campus Program

*Students participate in an "Off Campus" program, including:*

#### Term 1 Outdoor Education Camp

*Students spend 4 days in Mt Baw Baw National Park*

#### Term 3 Canberra Trip

#### Community Service Placement in Semester 1 or 2

### Semester Length Subjects

Coding  
Visual Art & Design  
Drama  
Food Technology  
Italian\*  
Japanese\*  
Music

*\* Studied for a term each in Semester 1, after which the student selects the language he prefers to continue on with through to Year 9 and (optionally) beyond.*

Visual Art & Design  
Drama  
Music  
Product Engineering (STEM)

Drama  
Food Technology  
Media  
Music  
Visual Communication  
Studio Arts

*Students select two electives each semester*

### Learning Diversity

The Simond's teaching staff recognise the wide spectrum of learning profiles within each class. Students with diverse learning needs are supported in the classroom by Learning Support Officers and through Individual Learning Plans that include customised learning goals and modified curriculum and assessments. For further information, please contact the Learning Diversity Coordinator.

### SPARK

SPARK stands for "Simonds Program for Accelerated Reading and Knowledge". As it sounds, SPARK is a separate subject with a focus on developing the reading skills of students who need extra support in this area. SPARK classes consist of no more than eight students and they run in place of languages.

## REP - Years 7-9

REP stands for “Reading Equals Power”. It’s an appropriate title given the link between wider reading and educational outcomes. REP involves four 30 minute sessions per week, where students read novels of their choice. To ensure the novels chosen are not too hard and not too easy, students read books from within their “reading range”, which is derived from their reading comprehension results. When students finish a novel, they complete an online comprehension quiz. The results of completed quizzes are fed back to teachers, parents and the student. This system allows students to read appropriately levelled material of their choice, whilst allowing teachers to track their students’ progress and provide extra support where necessary.

At the end of each semester, our students’ achievements in REP are celebrated through the presentation of awards for “most improved”, “most books read” and “most quiz points scored”. There is also healthy competition between homegroups to see who can score the most points.

Research on the importance of wider reading is very clear – it develops crucial cognitive skills, expands vocabulary and develops general knowledge. It really does give students power in the classroom and power in life. As such, it is the expectation that all Simonds students will read not only during REP, but also at home for 30 minutes per day. We ask that parents commit to ensuring this happens.

## Year 10

Students in Year 10 have increasing opportunities to explore new pathways and identify individual talents and interests. In addition to their core subjects, Year 10 students are able to accelerate in their studies and choose from a range of VCE Unit 1 & 2 subjects that are offered.

### Core Subjects

Careers\*  
Civics & Citizenship\*  
English  
Health & Physical Education  
Humanities  
Mathematics  
Religious Education  
Science

\* One semester each

### Elective Classes

Drama  
Food Technology  
Italian, Japanese or Step Up  
Music  
Product Design & Technology  
Visual Communication Media  
Studio Arts

### Acceleration

Year 10 students are able to accelerate their studies by choosing from a range of VCE Unit 1 & 2 subjects that are offered. VCE subjects available may vary from year to year, depending on the student demand for particular subjects. See the next page for information about VCE and VET

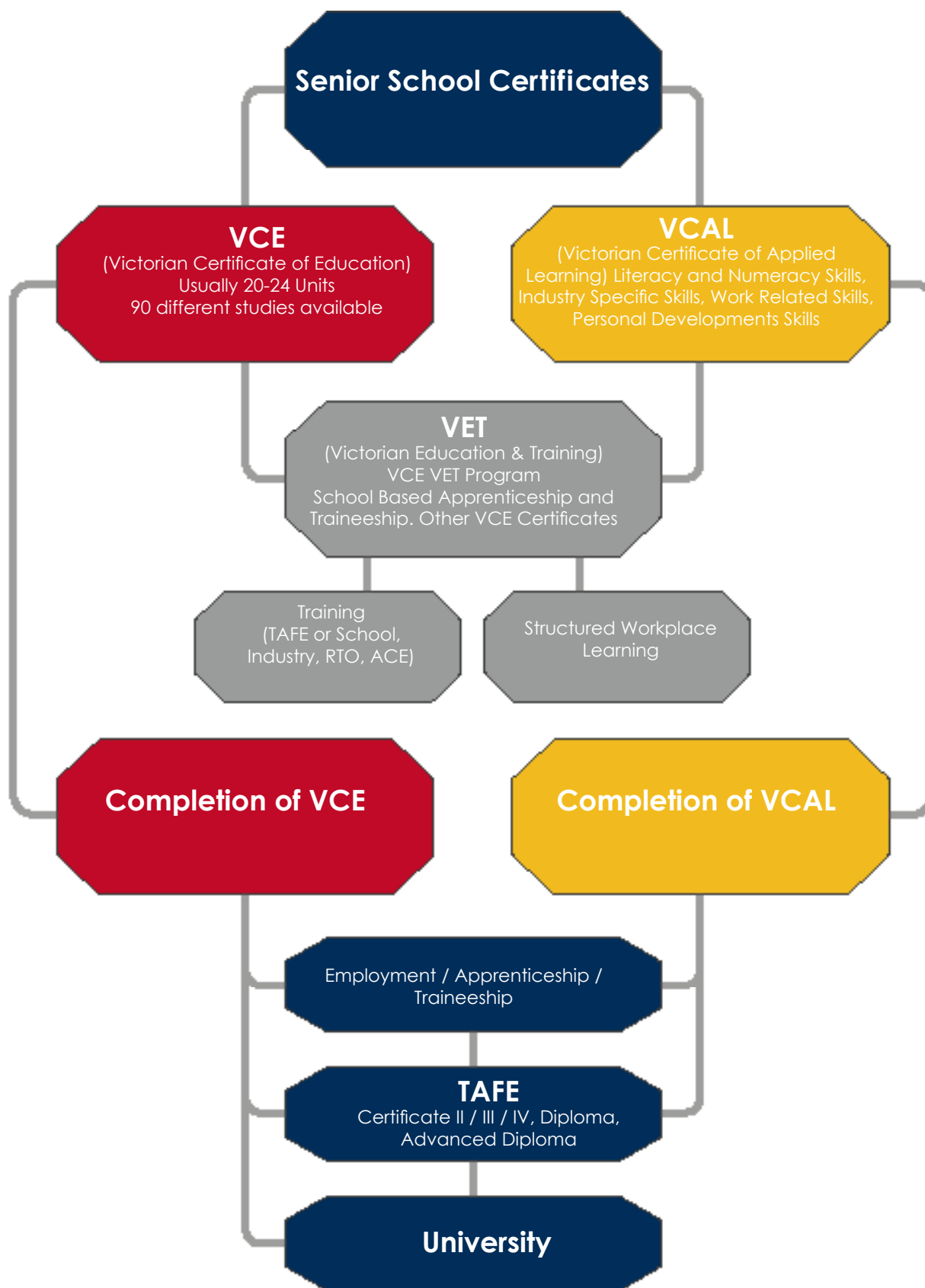
### Year 10 Work Experience Program

Students in Year 10 participate in work placements for a week during Term 3.





# SENIOR SCHOOL LEARNING PATHWAYS

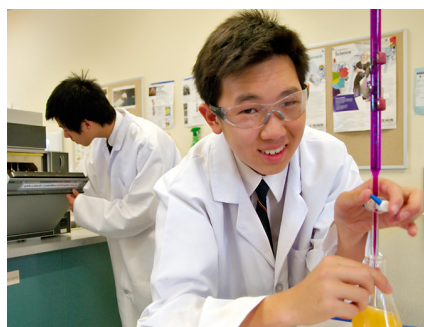


# VCE - Victorian Certificate of Education

By Years 11 and 12, students have developed preferred areas for their learning. Students are able to tailor a program suited to their needs and career aspirations. The emphasis in Years 11 and 12 is on the pursuit of academic excellence as they study for the Victorian Certificate of Education. The curriculum at Simonds allows students to complete their VCE program over Years 10, 11 and 12.

<b>English</b>	<b>Unit 1, 2, 3 &amp; 4</b>	English Literature
<b>Religious Education</b>	<b>Unit 2 Unit 3 &amp; 4</b>	Ethics & Morality Text & Traditions*
<b>Humanities</b>	<b>Unit 1 &amp; 2</b>	History - 20 <sup>th</sup> Century History - Revolutions
<b>Commerce</b>	<b>Unit 1, 2, 3 &amp; 4</b>	Accounting Business Management Economics Legal Studies
<b>Languages (LOTE)</b>	<b>Unit 1, 2, 3 &amp; 4</b>	Japanese Italian
<b>Mathematics</b>	<b>Unit 1 &amp; 2 Unit 3 &amp; 4</b>	General Mathematics Specialist Mathematics Mathematical Methods Further Mathematics Mathematical Methods Specialist Mathematics
<b>Physical Education</b>	<b>Unit 1, 2, 3 &amp; 4</b>	Physical Education Health & Human Development
<b>Science</b>	<b>Unit 1, 2, 3 &amp; 4</b>	Biology Chemistry Physics Psychology
<b>The Arts</b>	<b>Unit 1, 2, 3 &amp; 4</b>	Visual Communication & Design Media
<b>Technology</b>	<b>Unit 1, 2, 3 &amp; 4</b>	Food Studies Product Design & Technology

\* These subjects may be provided for study at The Academy of Mary Immaculate, Nicholson Street, Fitzroy.  
The availability of a particular unit of study will depend on the number of students choosing the unit and timetable constraints.





## VCAL - Victorian Certificate of Applied Learning

The Victorian Certificate of Applied Learning (VCAL) is a nationally recognized certificate. It is a hands-on option for students in Years 11 and 12. In Year 11 students complete the Foundation and Intermediate level of the VCAL and in Year 12 students complete the Senior level of the VCAL.

The VCAL gives students practical work-related experience and industry skills, as well as literacy and numeracy skills and the opportunity to build personal skills that are important for life and work.

Why Would You Choose to do the VCAL Instead of the VCE?

The VCE is a good option for students who would like to go on to further education at university. However, you might feel that this is not the right option for you.

Just like the VCE, the VCAL is an accredited senior secondary school qualification undertaken in Years 11 and 12. The VCAL is based on hands-on learning, also known as 'applied learning'.

If you choose to do the VCAL you will gain practical experience and 'employability' skills, as well as the skills you will need to go onto further training in the workplace or at a TAFE.

## VET - Vocational Education and Training, as part of a VCE or VCAL program

In addition to the VCE studies, a range of VET (Vocational Education and Training) studies are offered through the Inner Melbourne VET Cluster (IMVC). These studies allow for the completion of the VCE and a vocational certificate course normally provided to school leavers at a TAFE College.

VET programs should be of particular interest to students wishing to:

- Complete their VCE, obtain an ATAR and keep tertiary options open
- Undertake studies with a vocational focus that includes workplace learning
- Complete a nationally recognised TAFE certificate course

The programs are delivered at a number of venues in the inner Melbourne area. Students and parents should be aware that VET studies attract additional fees. Costs will vary according to the VET program selected.



## 2021 FEE SCHEDULE

Simonds Catholic College is committed to providing an affordable quality education with fees set to ensure it is accessible to all. Our efficient and considered resourcing and strategic financial planning means we are able to offer a wide range of programs similar to other schools. Our smaller size and inner city location also helps keep our fees affordable, as we are able to make use of a variety of sporting, educational and cultural facilities in close proximity to our school, without the cost associated with maintaining the same facilities in-house.

### Annual Fees

Annual fees are inclusive of tuition costs, materials for practical subjects, entrance fees and transport to and from sporting activities, camps, retreats, compulsory school excursions and costs of guest speakers and performers. The laptop levy is charged annually and we no longer charge an ICT levy or levies for electives. Students who study VET will be required to pay an additional fee, dependent on the VET subject and provider chosen.

2021 Fees	Year 7	Year 8	Year 9	Year 10	Year 11	Year 12
Tuition Fees*	\$3,450	\$3,450	\$3,560	\$3,560	\$4,450	\$4,450
Laptop Levy**	\$550	\$550	\$440	\$550	\$550	BYOD
<b>Total School Fees</b>	\$4,000	\$4,000	\$4,000	\$4,110	\$5,000	\$4,450

Simonds Catholic College offers a range of payment options. These options include paying weekly, fortnightly, monthly, quarterly, or annual instalments (see table below). Parents/Guardians will be asked to nominate a payment plan that is most suitable. A 'School Fee Payment Election Form' and a 'Direct Debit Request Authorisation Form' will be provided to you, please complete the form and return it to the College

Parents/Guardians that opt for a payment plan will have instalments automatically deducted as nominated, until the fees are paid in full. Individual payment plans not listed on the 'School Fee Payment Election Form' (including family assistance) must be discussed with/agreed to by the Business Manager, Mr Halyer Rayner or his delegate, prior to the commencement of the School year.

**Please note - if a College payment plan is not in place, all fees must be paid in full by 31 March 2021.**

Weekly	Fortnightly	Monthly	Quarterly
40 weekly payments	20 fortnightly payments	10 Monthly payments	4 Quarterly payments
Payments made on Thursdays	Payments made on Thursdays	Payments made on 11th or next working day	
From 11 February 2021 to 11 November 2021	From 11 February 2020 to 28 October 2021	From 11 February 2020 to 11 November 2021	11 Feb, 11 May, 11 Aug and 11 Nov 2021

### Payment Methods

The College accepts cash, cheque, direct credit or debit and credit cards (Visa or Mastercard only). Centrepay customers can have payments deducted automatically each fortnight, if they wish. Discounts apply for early settlement and siblings. If you are eligible for Family assistance or the State Government allowance for camps and excursions (CSEF), please advise the office so we can apply for the payment and ensure it is deducted from your fees if your application is successful.





## LOCATION AND CONTACT INFORMATION

The College is located across two inner city campuses. Both sites are well served by all forms of transport, including trams, trains and buses. Our close proximity to many excellent cultural and sporting facilities supports the learning of our students.

Website: [www.sccmelb.catholic.edu.au](http://www.sccmelb.catholic.edu.au)

Email: [info@sccmelb.catholic.edu.au](mailto:info@sccmelb.catholic.edu.au)

### St Mary's 7-9 Campus

The West Melbourne Campus caters for Years 7-9 and is built around St Mary Star of the Sea Church. The main entrance and office are located at the corner of Victoria Street and Chetwynd Street.

Address: 273 Victoria Street, WEST MELBOURNE VIC 3003

Phone: 03 9321 9200

### St Brigid's 10-12 Campus

The Fitzroy North Campus is located on the corner of Nicholson Street and Alexandra Parade and caters for our Years 10 - 12 students studying VCE, VET and VCAL classes. The main entrance and office can be accessed via York Street.

Address: 20 York Street, FITZROY NORTH VIC 3068

Phone: 03 9403 6800

## PUBLIC TRANSPORTATION OPTIONS

The Public Transport Victoria website can help assist with planning individual travel routes – we recommend you visit [www.ptv.vic.gov.au/journey](http://www.ptv.vic.gov.au/journey) to access their Journey Planner.

### Trams

#### St Mary's 7-9 Campus

- 57** *West Maribyrnong - City* runs along Victoria Street and stops at the main entrance to the campus, students can alight at the Chetwynd Street stop
- 55** *West Coburg - Domain Interchange, St Kilda Road* runs along nearby Peel Street. Students can alight at the Victoria Street stop
- 19** *North Coburg - City* runs along nearby Elizabeth Street, students can alight at the Queen Victoria Market stop
- 59** *Airport West - City* travels on nearby Elizabeth Street, alight at the Queen Victoria Market stop

### Buses

#### St Mary's 7-9 Campus

- 402** *Footscray - East Melbourne* runs along nearby Arden Street
- 216** *Caroline Springs - Sunshine Park* runs along nearby Spencer Street
- 219** *Sunshine Park - Gardenvale* runs along nearby Spencer Street
- 220** *Sunshine - Gardenvale* runs along nearby Dudley Street

### Trains

#### St Mary's 7-9 Campus

Flagstaff Station is nearby, a short 800m stroll down William Street

#### St Brigid's 10-12 Campus

- 96** *East Brunswick - St Kilda Beach* runs along Nicholson Street and stops near the entrance to the St Brigid's campus, students can alight at the Alexandra Parade stop
- 11** *West Preston - Docklands, Victoria Harbour* runs along nearby Brunswick Street. Students can alight at the Alexandra Parade stop

#### St Brigid's 10-12 Campus

- 546** *Clifton Hill - Carlton* runs along Alexandra Parade.
- 250** *Garden City via City - LaTrobe University* runs along Alexandra Parade
- 251** *Northland Shopping Centre* runs along nearby Rathdowne Street
- 253** *North Carlton* runs along nearby Rathdowne Street

#### St Brigid's 10-12 Campus

Clifton Hill Station is closest. Students can transfer to the 546 bus which stops on Alexandra Parade

Parliament Station, easy transfer to the 96 tram





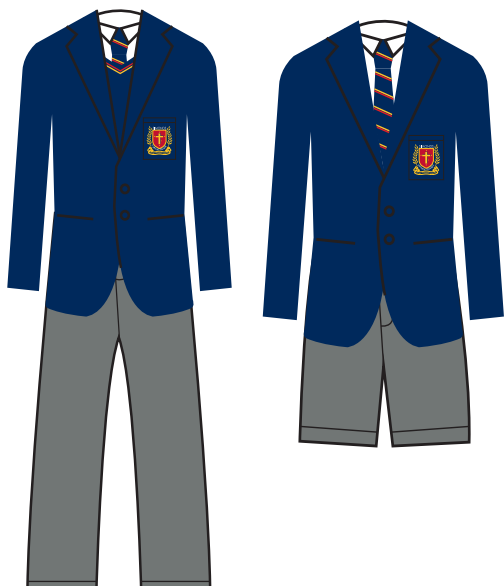
# SCHOOL UNIFORM

Our school uniform supplier is Noone Imagewear.  
Find them at 543 Keilor Road, Niddrie. Phone: 03 9379 5037

## Trading Hours:

Monday - Friday 8.30am to 5.30pm  
Saturday 9.00am to 1.00pm

## The compulsory School Uniform consists of:



Blazer with logo*	85 - 90 - 95	\$202.50
	100 - 105 - 110	\$208.95
	115 - 120 - 125	\$216.95
Tie*(C)	All Sizes	\$23.00
School Bag - with Logo*		\$72.00
Socks - dark socks - 3 pair pack*	All Sizes	(From) \$15.95
Shoes - black leather lace-up		

## Winter Uniform

Trousers - grey (Noone Brand)*	Youths (8-18)	\$52.95
	Mens (4-10)	\$54.95
Shirt - long sleeve white shirt*	All sizes	(From) \$30.95
Jumper - with logo*	85 - 90 - 95	\$96.50
	100 - 105 - 110	\$99.95
	115 - 120 - 125	\$104.50

## Summer Uniform

Shorts - grey*	Youths	\$47.00
	Mens	\$49.00
Shirt - short sleeve with logo*	All sizes	\$35.00



## Sport Uniform

School Tracksuit		
Tracksuit Pants - with logo*	All sizes	\$68.50
Tracksuit Top - soft-shell jacket*	All sizes	\$71.95
Sports Shorts - with logo*	All sizes	\$33.00
White polo shirt - with logo*	All sizes	\$44.95
Socks - white socks		
Shoes - runners		



## Optional School Uniform items:

Scarf (C)	\$12.00
Beanie (C)	\$8.00
Scarf & Beanie Combo (C)	\$17.00
Sports Cap (C)	\$8.00
Sports Jumper*	\$87.00

\* Items available from Noone Imagewear  
(C) Items available from the College Office  
Price list valid to 30<sup>th</sup> June 2021.  
Prices are subject to change without notice.