



2020 INFORMATION BOOKLET

St Mary's 7-9 Campus: 273 Victoria St, West Melbourne 3003

St Brigid's 10-12 Campus: cnr Alexandra Pde & Nicholson St, Fitzroy North 3068

T: 03 9321 9200 **E:** info@sccmelb.catholic.edu.au **W:** www.sccmelb.catholic.edu.au

OUR VISION IS TO DEVELOP CONFIDENT, WELL-ROUNDED YOUNG MEN WHO HAVE HOPE FOR THEIR FUTURE.

OUR MISSION

The Simonds Catholic College community, united in faith, inspires young men to become active, global citizens. Guided by Gospel values, we provide a safe and supportive learning environment in which each student is individually known. We challenge our students to become courageous, resilient and hope-filled.

WE VALUE

CATHOLIC BELIEFS AND TEACHINGS

particularly those relating to justice, charity and compassion. We encourage everyone to give of themselves, allocating time and other resources to people who are in need, both within and beyond the school community;

INCLUSIVITY

respecting people of all cultures, genders and religions who act in sympathy with our values;

PASTORAL PROGRAMS

that promote an appreciation for the whole person. We foster a spirit of mateship that strengthens through the school years, forging lifelong bonds;

FULLY COMMITTED TEACHERS

who provide contemporary and purposeful learning for all students;

RESPECTFUL BEHAVIOUR

We strive to provide a collaborative and supportive learning culture that recognises the dignity of each person. Respect for self, others and the environment is intrinsic to school life;

MOTIVATED STUDENTS

who actively pursue excellence and assume responsibility for their own learning.

*"Dear Young People...
Don't be afraid to dream of great things"*
Pope Francis

SCHOOL HISTORY

Established in 1996, Simonds Catholic College is the result of an amalgamation of West Melbourne's St. Mary's Boys' Regional School and East Melbourne's Cathedral College. We exist to provide an excellent Catholic education for boys in the inner-city area of Melbourne. A second campus, located in Fitzroy North, was opened in 2011 to cater for students in Years 11 and 12.

We are honoured to be the first school to be named after Justin Simonds, Archbishop of Melbourne 1963-67, Parish Priest of West Melbourne for 21 years, and the first Australian born Archbishop. His Australian heritage is most appropriate for our school, which aims to bring together boys from many different backgrounds and educate them towards maturity as responsible adults who are proud to be Australian. Justin Simonds was also a distinguished scholar and although he was only Archbishop of Melbourne for a few years, he made a substantial contribution to Catholic education at a time of great expansion in the number of Catholic secondary schools in the Archdiocese of Melbourne. Simonds Catholic College draws on the traditions of two excellent schools:

St Mary's Boys' Regional School

St Mary's Boys' Regional School began in 1855 as a primary school for boys. The school was located in the old St Mary's Church. During the week a curtain was drawn across the middle of the church. On one side of the curtain was St Mary's Girls' School and on the other St Mary's Boys' School. All the teachers at the boys' school were lay teachers. In 1902 the Christian Brothers were invited to administer the school which they did until 1985. A new school facing onto Howard Street was built in 1910. This school was further extended in 1970 and 1976 and the school gradually changed from providing primary education to catering for boys in Years 7-10.

Cathedral College

Cathedral College was so named because of its association with St Patrick's Cathedral, it has both an old and unique history. Originally the college was the foundation college of the Christian Brothers in Australia and was opened in 1871. At the end of 1967, CBC Victoria Parade, known simply as Parade, moved to Bundoora. During that year the Archdiocese bought the site from the Christian Brothers following the decision to establish Cathedral College as a diocesan school. Cathedral College was administered by the Christian Brothers until it closed in 1995.

COLLEGE CREST

The school emblem emphasises belonging, community and faith

Shield – Expresses our identity as a community which shares a common faith and purpose.

Cross – Reminds us of our membership in the Christian Community. The 3D effect symbolically reminds us of the multi-faceted nature of Christianity. These values include respect for self, others and the environment.

Laurel Leaves – Symbolically used throughout history to represent victory and success, students will not 'rest on their laurels' – they'll be known, supported and inspired on their path to a successful outcome.



Stars of the Southern Cross – Symbolises our membership in the Australian community. We are responsible citizens who are proud to be Australian, who work towards creating a country where all people are valued and encouraged to achieve their best.

Gold – Signifies our links with Cathedral College.

Maroon – Signifies our links with St Mary's Boys' Regional School.

Blue – Unifies the two schools, joined together to create Simonds Catholic College. It is also the colour traditionally associated with Mary and expresses our links with our parish Church, St Mary Star of the Sea.

PASTORAL CARE

The small size of Simonds Catholic College allows for boys to be individually known and appreciated for the unique person they are. A wide variety of structures and processes have been established to promote a sense of belonging and wellbeing amongst the boys, especially those who are new to the College.

Pastoral Care Teachers

All students are allocated to a Pastoral Care class. The Pastoral Care Teacher is responsible for the welfare of each student in this class. For Years 7-10 students, the Pastoral Care Teacher is also likely to take them for one or more subjects.

Pastoral Classes

Boys in Years 7-10 have a Pastoral Class each week. The aims of this class are to support each boy's social and emotional learning and to promote the wellbeing of all students. Years 11 and 12 students participate in a fortnightly Pastoral session.

Wellbeing at Simonds Program - W@SP

The College appointed to our staff in 2015 a Student Counsellor and Coordinator of Wellbeing, Mr Pascal Rohan. Mr Rohan has established the W@SP and is available to assist students, parents and staff with any emotional or wellbeing needs that arise during their time at the College.

Student Representative Council

Boys from Years 7-10 nominate themselves to be elected to the Student Representative Council. In Years 11 and 12, Student Leaders are chosen from the whole student group. Student Representative Council attend an annual, two day leadership camp and provide leadership for all students at Simonds Catholic College. The SRC organises many different activities across all year levels, including the annual Simonds Trivia Night and raising money for social justice activities.

Expectation of Students

As members of a Christian community we acknowledge the sacredness of our personal and communal lives. The expectations listed here aim to ensure that the rights of both students and members of staff are respected. They remind students of their responsibilities towards the development of a college environment in which excellence in teaching and learning are encouraged and supported.

Respect for Self

Respecting my own person enables me to grow in dignity and to achieve all that I am capable of achieving.

Respect for the Environment

By respecting the environment I acknowledge the sacredness of God's creation and my responsibility for its development.

Respect for Others

By respecting others I enhance their self-esteem, help them to recognise their personal abilities, and support them in their learning.

Good Manners

Good manners are small habitual ways of showing the consideration one would wish for oneself and of making social life more pleasant.



ENROLMENT PROCEDURES & GUIDELINES

Key Enrolment Dates

Applications Close for Year 7:	Late August 2020
Enrolment Interviews:	September 2020
Letters of Offer Posted:	End of October 2020

Enrolment Process

Simonds Catholic College adheres to the Enrolment Guidelines of the Melbourne Catholic Education Office. Catholics receive priority when enrolling; however, we welcome enrolment applications from all religious traditions.

Year 7 Entry

If you select Simonds Catholic College for your son, we require you to:

- Return a full completed **Enrolment Form** and any required documents to our Registrar
- Attend an **Enrolment Interview** with the College Principal
- **Letters of Offer** will be posted to families on the dates noted above

Upon confirmation of a place at Simonds Catholic College an acceptance fee of \$265.00 is payable to secure your son's enrolment. A further 10% Confirmation Deposit is due at the Information Evening, which is scheduled in November in the year prior to your son commencing at the College. While both the Acceptance Fee and Confirmation Deposit are non-refundable, the combined amount is allocated to the student's College Account, reducing the amount payable in Year 7.

Guidelines for Enrolment of Year 7 Students

Simonds Catholic College draws its enrolments from Priority Parishes allocated by the Catholic Education Office. Some parents living in other Parishes choose to enrol their sons at Simonds rather than their local regional college for a variety of reasons, including the College's central location for transport and parental work, its small size, particular curriculum offerings and emphasis on pastoral care.

Enrolment Criteria

Boys will be offered a place in Year 7 in the following order of priority:

- Catholic boys who live in a Priority Parish and attend a Catholic Primary school.
- Catholic boys who live in a Priority Parish and who do not attend a Catholic Primary school.
- Catholic boys who don't live in a Priority Parish and wish to attend Simonds for pastoral reasons.
- Non-Catholic boys who have attended a Catholic primary school and are residents of the catchment area.
- Boys from non-Catholic Eastern Churches who attend a Catholic Primary School.
- Boys from non-Catholic Eastern Churches who do not attend a Catholic Primary School.
- Non-Catholic boys who have not attended a Catholic primary school and are residents of the catchment area.
- Non-Catholic boys who do not live in the catchment area.

Note

- Siblings and applicants whose sister attends/ have attended either St Aloysius College or The Academy of Mary Immaculate will receive special consideration.
- Priority will be given to those families who submit enrolment applications by the due date.
- Families who submit late applications may be placed on a waiting list.
The above Enrolment Criteria will then apply to the waiting list.

Years 7-12 Mid-Year Entry

Mid-year enrolments for Years 7-12 can be accommodated if places are available. Once an Enrolment Form and the required documentation has been received, the Principal will conduct an interview with the student and his parents/guardians. Upon acceptance, a non-refundable Acceptance Fee and 10% of the annual tuition fee is payable prior to commencement at the school. This amount paid will be deducted from the first tuition account.

Priority Parishes Formally Attached to Simonds Catholic College

St Mary's	Ascot Vale	Corpus Christi	Glenroy
St Ambrose's	Brunswick	St Thomas Moore's	Hadfield
Our Lady Help of Christians	Brunswick East	Holy Rosary	Kensington
St Margaret Mary's	Brunswick North	Our Lady of Perpetual Help	Maidstone
St Joseph's	Brunswick West	St Augustine's	Melbourne, Bourke St
St John's	Clifton Hill	St Francis'	Melbourne, Lonsdale St
St Paul's	Coburg	St Patrick's	Cathedral
St Bernard's	Coburg East	St Michael's	North Melbourne
St Joseph's	Collingwood	St Mary Star of the Sea	West Melbourne
St Mark's	Fawkner	St Fidelis'	Moreland
St Matthew's	Fawkner North	St Francis de Sales	Oak Park
All Saints	Fitzroy	St Carthage's	Parkville
St Brigid's	Fitzroy North	St Oliver Plunkett's	Pascoe Vale
St Brendan's	Flemington	St Ignatius	Richmond
St Monica's	Footscray	St James'	Richmond North

Primary Schools Attached to our Priority Parishes

St Mary's	Ascot Vale	St Brendan's	Flemington
Our Lady Help of Christian's	Brunswick East	St Monica's	Footscray
St Margaret Mary's	Brunswick North	St John's	Footscray West
St Joseph's	Brunswick West	Corpus Christi	Glenroy
St John's	Clifton Hill	St Thomas More's	Hadfield
St Paul's	Coburg	Holy Rosary	Kensington
St Bernard's	Coburg East	St Margaret's	Maribyrnong
St Joseph's	Collingwood	St Fidelis'	Moreland
St Mark's	Fawkner	St Michael's	North Melbourne
St Matthew's	Fawkner North	St Francis de Sales	Oak Park
Sacred Heart	Fitzroy	St Oliver Plunkett's	Pascoe Vale
		Trinity Catholic School	Richmond North



CURRICULUM

Our curriculum is comprehensive and challenging. Each student is stimulated and provided with opportunities to be extended to reach their full potential. We provide for the different needs and talents of all students through both support and extension programs.

Years 7-9

The focus in Years 7-9 is on building solid academic foundations in preparation for the years ahead. Students' literacy, numeracy and technological aptitude are fundamental requirements for students' lives and futures, and these areas are given particular emphasis in the curriculum.

Core Subjects

Year 7

English
Health & Physical Education
Humanities
Mathematics
Religious Education
Science

Year 8

English
Health & Physical Education
Humanities
Italian or Japanese or Literacy Support
Mathematics
Religious Education
Science

Year 9

Careers, Civics & Citizenship*
English
Health & Physical Education
Humanities
Italian, Japanese
Mathematics
Product Engineering (STEM)*
Religious Education
Science

* One semester each

Semester Length Subjects

Art & Design
Drama
Food Technology
Italian*
Japanese*
Music

* Studied for a term each in Semester 1, after which the student selects the language he prefers to continue on with through to Year 9 and (optionally) beyond.

Art & Design
Drama
Music
Product Engineering (STEM)

Drama
Food Technology
Media
Music
Visual Communication
Studio Arts

Students select two electives each semester

Year 9 Off Campus Program

Students participate in an "Off Campus" program, including:

Term 1 Outdoor Education Camp

Students spend 4 days in Mt Baw Baw National Park

Term 3 Canberra Trip

Community Service Placement in Semester 1 or 2

Learning Support

The Simonds teaching staff recognise the wide spectrum of learning profiles within each class. Students with diverse learning needs are supported in the classroom by Learning Support Officers and through Individual Learning Plans that include customised learning goals and modified curriculum and assessments. For further information, please contact the Learning Support Coordinator.

SPARK

SPARK stands for "Simonds Program for Accelerated Reading and Knowledge". As it sounds, SPARK is a separate subject with a focus on developing the reading skills of students who need extra support in this area. SPARK classes consist of no more than eight students and they run in place of languages.

REP - Years 7-9

REP stands for "Reading Equals Power". It's an appropriate title given the link between wider reading and educational outcomes. REP involves four 30 minute sessions per week, where students read novels of their choice. To ensure the novels chosen are not too hard and not too easy, students read books from within their "reading range", which is derived from their reading comprehension results. When students finish a novel, they complete an online comprehension quiz. The results of completed quizzes are fed back to teachers, parents and the student. This system allows students to read appropriately levelled material of their choice, whilst allowing teachers to track their students' progress and provide extra support where necessary.

At the end of each semester, our students' achievements in REP are celebrated through the presentation of awards for "most improved", "most books read" and "most quiz points scored". There is also healthy competition between homegroups to see who can score the most points.

Research on the importance of wider reading is very clear – it develops crucial cognitive skills, expands vocabulary and develops general knowledge. It really does give students power in the classroom and power in life. As such, it is the expectation that all Simonds students will read not only during REP, but also at home for 30 minutes per day. We ask that parents commit to ensuring this happens.

Year 10

Students in Year 10 have increasing opportunities to explore new pathways and identify individual talents and interests. In addition to their core subjects, Year 10 students are able to accelerate in their studies and choose from a range of VCE Unit 1 & 2 subjects that are offered.

Core Subjects

Careers*
Civics & Citizenship*
English
Health & Physical Education
Humanities
Mathematics
Religious Education
Science

* One semester each

Elective Classes

Drama
Food Technology
Italian, Japanese or Step Up
Music
Product Design & Technology
Visual Communication Media
Studio Arts

Acceleration

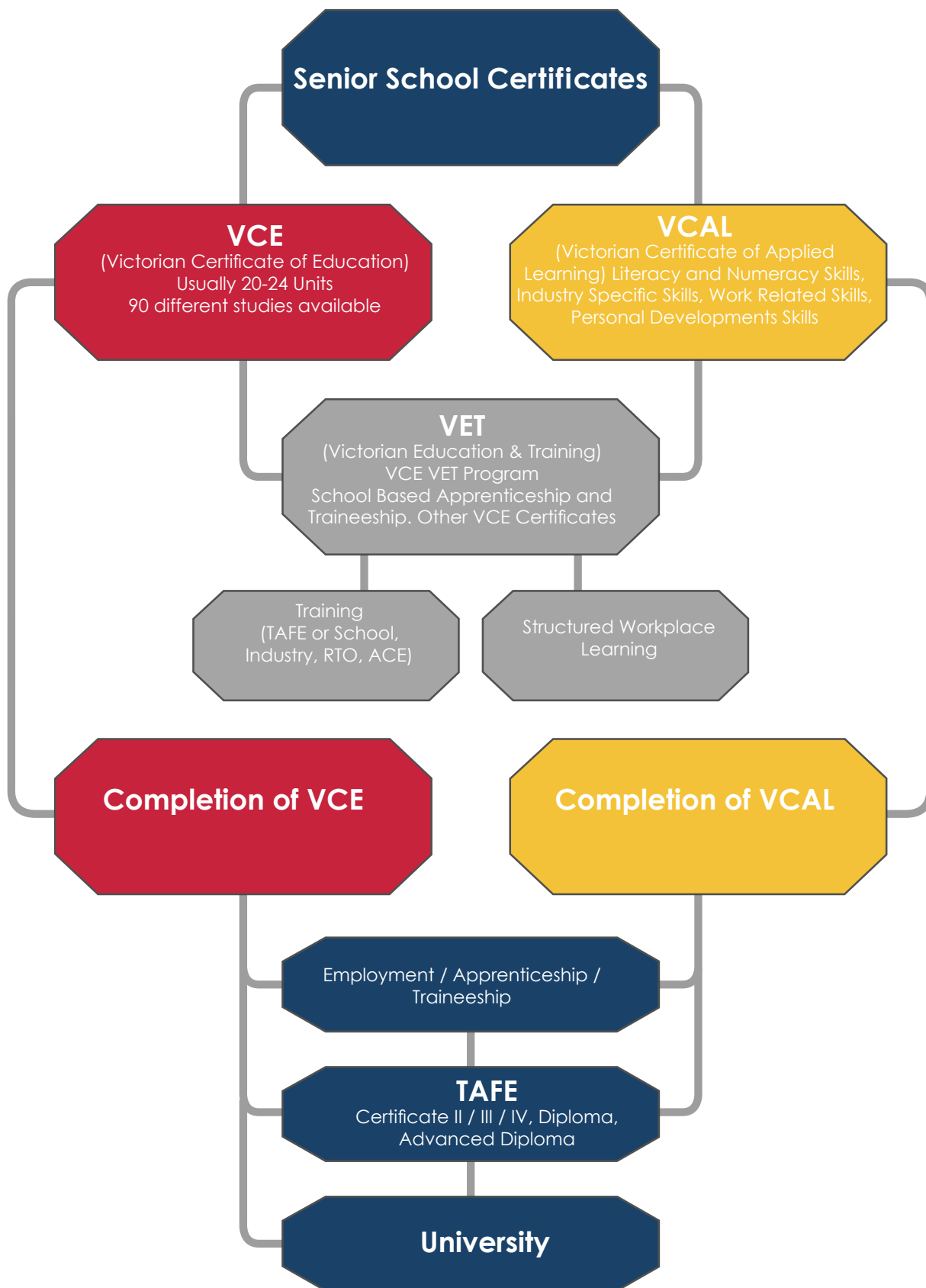
Year 10 students are able to accelerate their studies by choosing from a range of VCE Unit 1 & 2 subjects that are offered. VCE subjects available may vary from year to year, depending on the student demand for particular subjects. See the next page for information about VCE and VET

Year 10 Work Experience Program

Students in Year 10 participate in work placements for a week during Term 3.



SENIOR SCHOOL LEARNING PATHWAYS



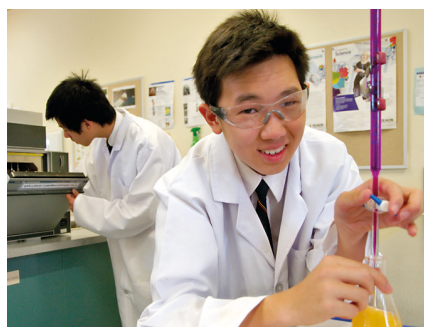
VCE - Victorian Certificate of Education

By Years 11 and 12, students have developed preferred areas for their learning. Students are able to tailor a program suited to their needs and career aspirations. The emphasis in Years 11 and 12 is on the pursuit of academic excellence as they study for the Victorian Certificate of Education. The curriculum at Simonds allows students to complete their VCE program over Years 10, 11 and 12.

English	Unit 1, 2, 3 & 4	English Literature
Religious Education	Unit 2 Unit 3 & 4	Ethics & Morality Text & Traditions*
Humanities	Unit 1 & 2	History - 20 th Century History - Revolutions
Commerce	Unit 1, 2, 3 & 4	Accounting Business Management Economics Legal Studies
Languages (LOTE)	Unit 1, 2, 3 & 4	Japanese Italian
Mathematics	Unit 1 & 2 Unit 3 & 4	General Mathematics Specialist Mathematics Mathematical Methods Further Mathematics Mathematical Methods Specialist Mathematics
Physical Education	Unit 1, 2, 3 & 4	Physical Education Health & Human Development
Science	Unit 1, 2, 3 & 4	Biology Chemistry Physics Psychology
The Arts	Unit 1, 2, 3 & 4	Visual Communication & Design Media
Technology	Unit 1, 2, 3 & 4	Food Studies Product Design & Technology

* These subjects may be provided for study at The Academy of Mary Immaculate, Nicholson Street, Fitzroy.

The availability of a particular unit of study will depend on the number of students choosing the unit and timetable constraints.



VCAL - Victorian Certificate of Applied Learning

The Victorian Certificate of Applied Learning (VCAL) is a nationally recognized certificate. It is a hands-on option for students in Years 11 and 12. In Year 11 students complete the Foundation and Intermediate level of the VCAL and in Year 12 students complete the Senior level of the VCAL.

The VCAL gives students practical work-related experience and industry skills, as well as literacy and numeracy skills and the opportunity to build personal skills that are important for life and work.

Why Would You Choose to do the VCAL Instead of the VCE?

The VCE is a good option for students who would like to go on to further education at university. However, you might feel that this is not the right option for you.

Just like the VCE, the VCAL is an accredited senior secondary school qualification undertaken in Years 11 and 12. The VCAL is based on hands-on learning, also known as 'applied learning'.

If you choose to do the VCAL you will gain practical experience and 'employability' skills, as well as the skills you will need to go onto further training in the workplace or at a TAFE.

VET - Vocational Education and Training, as part of a VCE or VCAL program

In addition to the VCE studies, a range of VET (Vocational Education and Training) studies are offered through the Inner Melbourne VET Cluster (IMVC). These studies allow for the completion of the VCE and a vocational certificate course normally provided to school leavers at a TAFE College.

VET programs should be of particular interest to students wishing to:

- Complete their VCE, obtain an ATAR and keep tertiary options open
- Undertake studies with a vocational focus that includes workplace learning
- Complete a nationally recognised TAFE certificate course

The programs are delivered at a number of venues in the inner Melbourne area. Students and parents should be aware that VET studies attract additional fees. Costs will vary according to the VET program selected.



2020 FEE SCHEDULE

At Simonds Catholic College we provide quality education and facilities at an affordable price. We often get asked how we are able to keep our fees lower than similar schools in the area. Due to our efficient and considered resourcing and strategic financial planning, we are able to offer a wide range of programs similar to other schools. Our smaller size and inner-city location also help keep our fees low as we are able to make use of a variety of sporting, educational and cultural facilities in close proximity to our school, without the cost associated with maintaining the same facilities in-house.

Annual Fees

Annual fees are inclusive of tuition costs, materials for practical subjects, entrance fees and transport to and from sporting activities, camps, retreats, compulsory school excursions and costs of guest speakers and performers.

An Information Communication Technology (ICT) Levy of \$160 is applied to students in Years 7-12.

Students who study VET will be required to pay an additional fee, dependent on the VET subject and provider chosen.

	Fees	ICT Levy	Laptop
Year 7	\$2990	\$160	\$550
Year 8	\$2990	\$160	\$440
Year 9	\$2990	\$160	N/A
Year 10	\$2990	\$160	\$550
Year 11	\$3840	\$160	N/A
Year 12	\$3840	\$160	N/A

* Please note fees are subject to change

Altar Server Tuition Scholarships

Students who become altar servers at St Patrick's Cathedral are eligible for a tuition scholarship of \$430 per year. This amount is collected by the College and credited to the student's college fees account.

Payments

Flexible payment options can be arranged by speaking with the Business Manager. Options include a range of installment plans as well as incentives for early payment of the full college account each year.



LOCATION AND CONTACT INFORMATION

The College is located across two inner city campuses. Both sites are well served by all forms of transport, including trams, trains and buses. Our close proximity to many excellent cultural and sporting facilities supports the learning of our students.

Website: www.sccmelb.catholic.edu.au

Email: info@sccmelb.catholic.edu.au

St Mary's 7-9 Campus

The West Melbourne Campus caters for Years 7-9 and is built around St Mary Star of the Sea Church. The main entrance and office are located at the corner of Victoria Street and Chetwynd Street.

Address: 273 Victoria Street, WEST MELBOURNE VIC 3003

Phone: 03 9321 9200

St Brigid's 10-12 Campus

The Fitzroy North Campus is located on the corner of Nicholson Street and Alexandra Parade and caters for our Years 10 - 12 students studying VCE, VET and VCAL classes. The main entrance and office can be accessed via York Street.

Address: 20 York Street, FITZROY NORTH VIC 3068

Phone: 03 9403 6800

PUBLIC TRANSPORTATION OPTIONS

The Public Transport Victoria website can help assist with planning individual travel routes – we recommend you visit www.ptv.vic.gov.au/journey to access their Journey Planner.

Trams

St Mary's 7-9 Campus

- 57** West Maribyrnong - City runs along Victoria Street and stops at the main entrance to the campus, students can alight at the Chetwynd Street stop
- 55** West Coburg - Domain Interchange, St Kilda Road runs along nearby Peel Street. Students can alight at the Victoria Street stop
- 19** North Coburg - City runs along nearby Elizabeth Street, students can alight at the Queen Victoria Market stop
- 59** Airport West - City travels on nearby Elizabeth Street, alight at the Queen Victoria Market stop

Buses

St Mary's 7-9 Campus

- 402** Footscray - East Melbourne runs along nearby Arden Street
- 216** Caroline Springs - Sunshine Park runs along nearby Spencer Street
- 219** Sunshine Park - Gardenvale runs along nearby Spencer Street
- 220** Sunshine - Gardenvale runs along nearby Dudley Street

Trains

St Mary's 7-9 Campus

Flagstaff Station is nearby, a short 800m stroll down William Street

St Brigid's 10-12 Campus

- 96** East Brunswick - St Kilda Beach runs along Nicholson Street and stops near the entrance to the St Brigid's campus, students can alight at the Alexandra Parade stop
- 11** West Preston - Docklands, Victoria Harbour runs along nearby Brunswick Street. Students can alight at the Alexandra Parade stop

St Brigid's 10-12 Campus

- 546** Clifton Hill - Carlton runs along Alexandra Parade.
- 250** Garden City via City - LaTrobe University runs along Alexandra Parade
- 251** Northland Shopping Centre runs along nearby Rathdowne Street
- 253** North Carlton runs along nearby Rathdowne Street

St Brigid's 10-12 Campus

Clifton Hill Station is closest. Students can transfer to the 546 bus which stops on Alexandra Parade

Parliament Station, easy transfer to the 96 tram



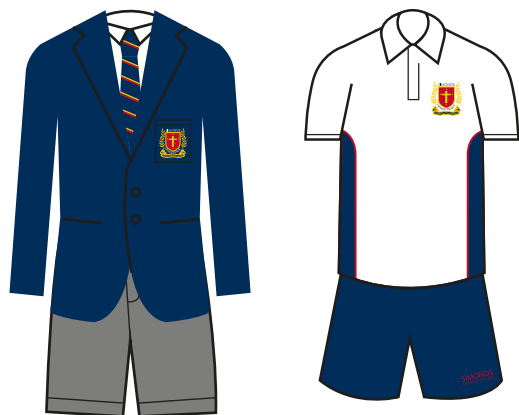
SCHOOL UNIFORM

Our school uniform supplier is Noone Imagewear.
Address: 543 Keilor Road, Niddrie. Phone: 03 9379 5037

Trading Hours:

Monday - Friday 8.30am to 5.30pm
Saturday 9.00am to 1.00pm

The compulsory School Uniform consists of:



Blazer with logo*	85 - 90 - 95	\$202.50
	100 - 105 - 110	\$208.95
	115 - 120 - 125	\$216.95
Tie* _(C)	All Sizes	\$23.00
School Bag - with Logo*		\$72.00
Socks - grey - 3 pair pack*	All Sizes	(From) \$14.50
Shoes - black leather lace-up		

Winter Uniform

Trousers - grey (Noone Brand)*	Youths (8-18)	\$52.95
	Mens (4-10)	\$54.95
Shirt - long sleeve white shirt*	All sizes	(From) \$30.95
Jumper - with logo*	85 - 90 - 95	\$96.50
	100 - 105 - 110	\$99.95
	115 - 120 - 125	\$104.50

Summer Uniform

Shorts - grey*	Youths (8-18)	\$47.00
	Mens (4-10)	\$49.00
Shirt - short sleeve with logo*	All sizes	\$35.50

Sport Uniform

School Tracksuit		
Tracksuit Pants - with logo*	All sizes	\$68.50
Tracksuit Top - soft-shell jacket*	All sizes	\$71.95
Sports Shorts - with logo*	All sizes	\$33.00
White polo shirt - with logo*	All sizes	\$44.95
Socks - white socks		
Shoes - runners		

Optional School Uniform items:

Scarf _(C)	\$12.00
Beanie _(C)	\$ 8.00
Scarf & Beanie Combo _(C)	\$17.00
Sports Cap _(C)	\$ 8.00
Rugby Jumper*	\$ 85.00

* Items available from Noone Imagewear
(C) Items available from the College Office

Price list valid to 30th June 2020.
Prices are subject to change without notice.